

PART OF THE SW. 1/4, OF SEC 27, & THE NE. 1/4 OF SEC 33, & THE NW. 1/4 OF SEC 34 T.7N., R.1W., S.L.B. & M.

JEFF ALLEN SUBDIVISION

IN WEBER COUNTY

TAXING UNIT: 28

SCALE 1" = 80'

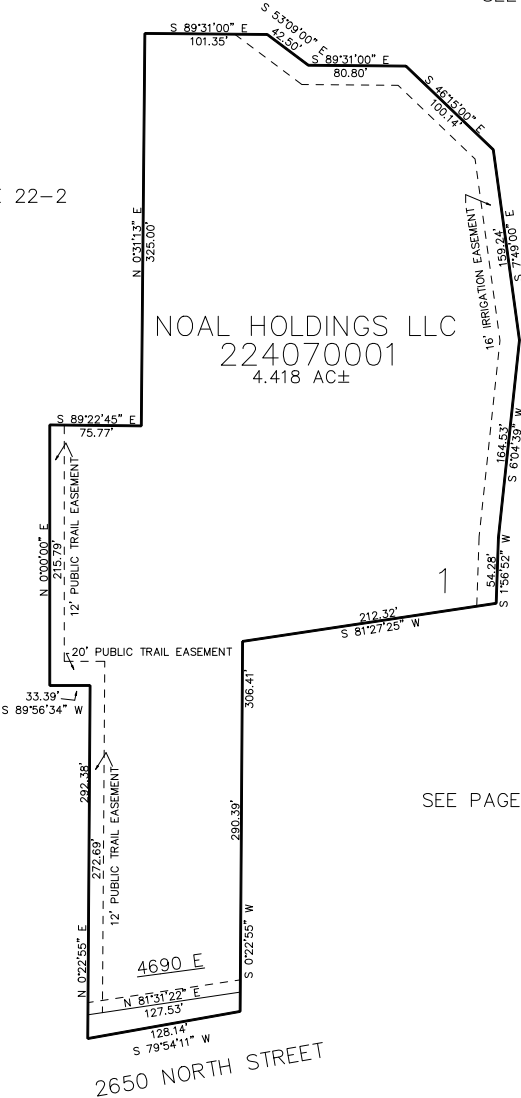
SEE PAGE 21

SEE PAGE 22-2

NOAL HOLDINGS LLC
224070001
4.418 AC±

SEE PAGE 46

SEE PAGE 40



10' UTILITY & DRAINAGE EASEMENTS EACH
SIDE OF PROPERTY LINES AS INDICATED
BY DASHED LINES EXCEPT AS OTHERWISE
SHOWN.

FOR COMPLETE SURVEY DATA SEE
ORIGINAL DEDICATION PLAT IN
BOOK 93, PAGE 04 OF RECORDS.